

2022

CENTER FOR DEVELOPMENTALLY DISABLED

ANNUAL REPORT



CDDKC.ORG



Letter From Our President and CEO

Sarah Mudd, President/CEO

The year 2022 marks the 50th anniversary of CDD. During this momentous anniversary, I reflect both on the incredible work behind us and the work still ahead needed to set up the organization for the next 50 years. The work we do has become more difficult and more complicated. But despite that, the incredible work of our teams, past and present, has provided incredible services that make a difference in the lives of the individuals we support.

The lives of people with developmental disabilities have improved greatly over the last 50 years. Individuals are in the community, holding jobs, participating in community activities, and living in neighborhoods that welcome them with open arms. They can do this because people were committed to the mission to *support persons with disabilities in achieving their fullest potential*. It is my deepest commitment that we set up the organization to be even better 50 years from now. But we know the work of the last 50 years cannot stop or slow. We must keep pushing ahead.

CDD was originally a for-profit organization started by Iva Sutton and her family members in 1972. The program started with two group homes in the north Hyde Park neighborhood. The early to mid-1970s was a time when community-based programs were developed to remove individuals from large institutional settings and to provide homes. In the 1970s, state and county dollars were utilized to fund services in Missouri to comply with federal law. CDD used these funds, along with HUD grants and loans, to begin constructing group homes. Over the years, CDD continued to build or purchase group homes and apartment complexes. In

recent years, we have purchased single-family homes and built duplexes. Today, CDD serves individuals in at least 48 locations throughout Jackson and Clay counties. We have come a long way, all because of the foundation of that work started 50 years ago.

We know our greatest achievements are not behind us, they are in front of us, and we are excited about our future! CDD recently announced the consolidation with Rainbow Center for Communicative Disorders which allow us to begin assisting families and individuals as early as three years old. CDD will have a portfolio of services to assist people throughout their lifespan. We are so excited to be working with the employees and board members from Rainbow Center to build strong services for individuals of all ages. Additionally, CDD is continuing our building efforts to provide smaller, affordable, accessible homes with funds from our \$6.2 million capital campaign, **Nurture, Enrich, Thrive: A Campaign for Inclusive Living**. We plan to build seven new homes, most of which will be used to support individuals with high medical needs.

As CDD celebrates our 50-year milestone, we are proud of the achievements we've made. Pausing to reflect is wonderful. But pushing forward and continuing the important work while improving is what drives us. Vince Lombardi once said, "the achievements of an organization are the results of the combined effort of each individual". Every employee, individual receiving services, and other valued stakeholders are responsible for CDD's success. It has not always been easy, but it has always been worth it. **We are excited about our future and the new adventures coming our way!**





Who We Are:

CDD is a private, not-for-profit corporation founded in 1972. CDD provides residential care services and day habilitation to adults with developmental disabilities in the greater Kansas City, MO area. Accredited by CARF, CDD maintains national quality of service standards for our housing and community placement options and opportunities.

Our Mission:

To support persons with disabilities in achieving their fullest potential.

Our Vision:

Individuals with disabilities are connected to their communities, benefit from the highest standard of sustainable quality supports, and are living their best lives.

Our Values:

- Each person is unique and their personal journey should be respected and supported.
- With encouragement and assistance, everyone can make lifestyle choices.
- Each person has the right to be treated with kindness and respect and freedom from intimidation.
- Lives are enriched through social relationships, community involvement, and access to comfortable and safe residential (and enrichment) opportunities.
- Everyone has the means to express themselves, to communicate, to interact, and to develop relationships resulting in a positive self-image.

Our Services and Programs



Supported Living:

Independent Supported Living (ISL's) services support individuals age 16 and over, who may choose to continue living in the family home, or independently in the community using paid supports to augment available natural and generic community supports. ISL's support an individuals right to choose where and with whom they want to live, participation in chosen activities, and engagement with the community.



PALS University

Day Habilitation provides individualized day activities that support the participant's definition of a meaningful day. Participants are given the opportunity to be involved in community living skills such as shopping, recreation and socialization skills. Daytime activities are also provided to participants.



Group Living

Group home living provides 24 hour personal care and habilitation for adults with developmental disabilities in order to help them develop self-help skills, gain work experience, and participate in community activities.



Community Integration

Community Integration is the opportunity to participate within the community, and be valued for the unique skills and abilities that make you who you are. CDD's community integration clients determine their definition of a meaningful day, centering their community activities and outings around the things that they enjoy.



Respite

CDD offers respite to individuals needing temporary care. Respite provides all supports offered in CDD's Residential Service homes and is available for up to 60 days per year for an individual.



Employment Support

Through our Employment program individuals are able to explore job opportunities they may have never considered. We are also working on partnership with local businesses to fulfill their Employment needs.

2021 Agency Highlights





AGENCY HIGHLIGHTS

PALS University

PALS U has been excited to open again in February 2022. We have experience great growth and opportunities for everyone in attendance. We are currently volunteering in partnership with Kansas City Parks and Rec, Habitat for Humanity and Harvesters. We look forward to adding more volunteer sites and we currently serve 27 individuals in PALS U Day Services, 7 Individuals in our Employment Program and 14 Individuals in our 1x1 services including Community Networking, and Individual Skill Development. The team is working hard to develop partnerships with local businesses to offer more employment opportunities.

Our 2022 Field Trips include:

- Crown Center
- Union Station
- KC Streetcar
- Browne's Irish Market
- Lakeside Nature Center
- Bass Pro Shops





AGENCY HIGHLIGHTS

Community Days

Recognizing organization doing good in our community.

Community Days is all about recognizing the good in our community. KMBC Channel 9 and Kansas City's OWN KCWE have been highlighting different organizations on the 9th and 29th of each month and sharing the positive impact they've been making in our neighborhoods. In March CDD was honored to be one of the organizations featured!

Below is one of our dynamic featured stories by EJ Navarrete - a Program Trainer with the CDD. To read all of the reason why people work at CDD visit cddkc.org/communitydays/ or scan the QR code on this page.

EJ Navarrete's Story

Growing up I've always had my younger brother by my side and only a year and four months apart. I never really understood his disabilities or knew of intellectual disability or cerebral palsy. It wasn't until later in life that I realized what it was or even meant.

I remember my mom always saying that the doctors would say that he wouldn't be able to walk, ride a bike, or do some of the other things we did as kids.

With the help and work of my mom and my older sisters he overcame a lot of obstacles in life and learned how to do things the doctors said that he never would. I remember us just playing and having fun even if he was in his leg brace or at times a walker. That didn't matter to us we were being kids.

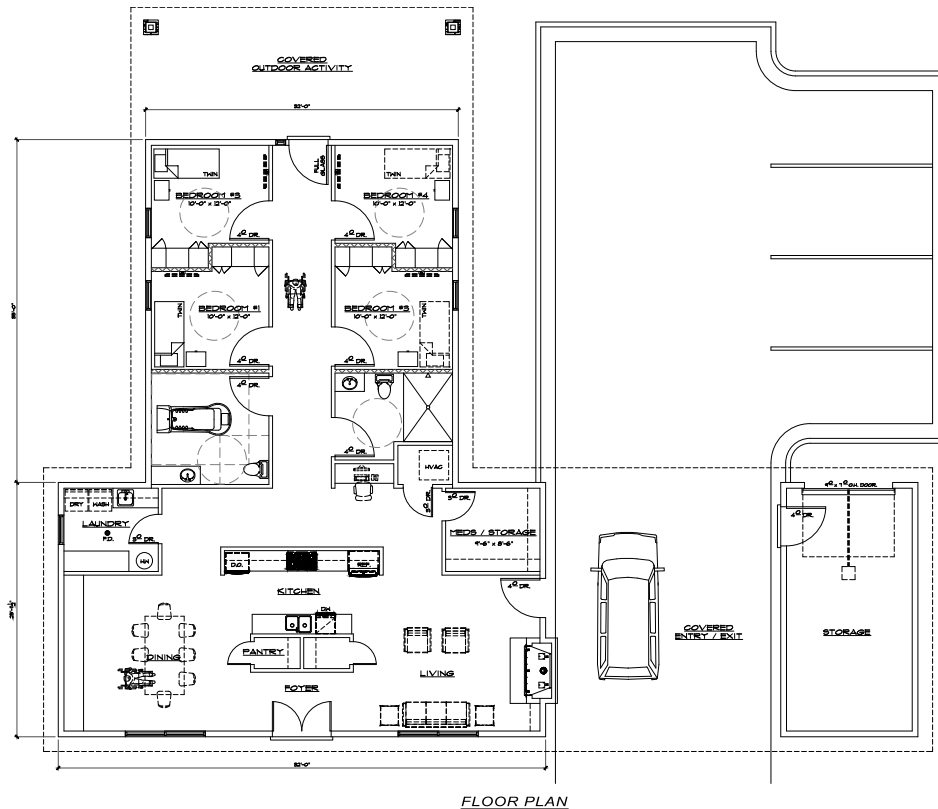
When we started school that's when I felt there was a difference because he didn't go to the same elementary school as I did and went to a special school for kids that were disabled. It wasn't until junior high school that they stopped the segregation, and we were able to attend the same school together.

For him that made a big difference in his life and the fact that he could be with his big brother again and doing the same things that I did.

When I started to run track and field, my coach made it a point to also have him on the team to help and make sure he felt that he was part of the team.

At that point in my life, I didn't want him to feel any different than I. My friends became his friends, and we are once again acting as teenagers and hanging out and didn't see his disability, but we saw him as Eddie my little brother.





FLOOR PLAN



FRONT ELEVATION



Medical ISL Home

1/8" = 1'-0"

8-23-2021



AGENCY HIGHLIGHTS

Nurture, Enrich, Thrive: A Campaign for Inclusive Living

CDD is a leader in providing safe and accessible group home situations, yet strongly believes that the future of inclusive and equitable environments lies in a new model of care.

By moving from the current model of group homes to Individual Supported Living (ISL) homes, CDD will be able to support three to four residents in a nurturing, single family home environment. These are homes just like yours and mine.

Campaign Budget

Construction: \$4,727,319

Programs, Health, and Safety: \$500,000

Endowment: \$500,000

Expenses: \$320,000

Goal: \$6,047,319

Campaign Progress

Capital: \$1,712,855

Programs, Health, and Safety: \$357,868

Endowment: \$20,000

We would like to thank our campaign contributors for their generous gifts and continued support of the individuals supported by CDD services.

If you would like to support the **Nurture, Enrich Thrive, Campaign** please reach out to:

Karrie Duke, Chief Development Officer

kduke@cddkc.org • 816-531-0045 ext. 109

Our Financials

Support

	2022	2021
Fees from government agencies	\$15,277,014	\$13,561,709
Contributions and grants	\$2,437,002	\$1,108,935
HUD Subsidies	\$252,197	\$288,500
Investments	\$50,988	\$313,654
Rental income	\$162,862	\$162,318
Other	\$38,045	\$221,077
Total	\$18,218,108	\$15,658,214

Expenses

	2022	2021
Programs	\$15,610,625	\$14,439,338
General, administrative, & misc	\$1,347,612	\$1,400,856
Fundraising	\$283,665	\$215,337
Total	\$17,241,902	\$16,055,531



2021-2022 Board of Directors



JEREMIE BALLINGER
Chairperson

Director of Organizational
Development,
Special Olympics
North America



PAUL RAMLOW
Vice Chairperson

Biological Safety Officer,
Children's Mercy Hospital



OLIVIA DORSEY
Secretary

Community Volunteer



BRADLEY CONLEY
Treasurer

Senior Vice President/Market
Exec. Commercial Banking/
Great Plains Mktg.,
Bank of America Merrill Lynch



TRI BUI

Federal Employee



MIKE COCHRAN

Vice-President of Tax,
Delaware Life Insurance
Company



ADAM COLLINS

Director,
Cerner Corporation



LAUREN GEPFORD

Director of Program Rural
Party Lab, Movement Labs



LEILANI HAYWOOD

Marketing Specialist,
EPEC's The Grooming Project



GREER LANG

Partner,
Lewis Brisbois Bisgaard &
Smith LLP



CHAD MURPHY

Managing Director,
Risk & Financial Advisor,
Deloitte & Touche LLP



DERRICK NELSON

Sr. Director, Diversity,
Equity and Inclusion,
St. Luke's Health System



TYLER SETTER

Sales Director,
Premier, Inc.



BETH VAUGHAN

Community Volunteer



ROGER WILLIAMS

Community Volunteer

2021-2022 Contributors

15⁺

\$15,000 and Above

- Carter Community Memorial Trust
- Denise and Will Talbert
- J.E. Dunn Family Foundation
- Sunderland Foundation
- Tyler Setter
- William T. Kemper Foundation

5⁺

\$5,000 and Above

- Adam and Marin Collins
- Bank of America
- Brad and Sara Conley
- Estate of Reta Roe
- Lockton Company

1⁺

\$1,000 and Above

- Chad and Michelle Murphy
- Edward Earls
- Grantham University
- Greer Lang
- John C. Griswold Foundation
- Kathy Ross
- Louis and Mickey Gehring
- Morgan Family Foundation
- Rita Pyle
- Roger and Everlyn Williams
- Sarah Mudd
- UMB Bank

+

\$10 and Above

- | | | | |
|--|-------------------------------|--|---------------------------------|
| • Abundant Life Baptist Church | • Dawn Scott | • Karen Naugle | • Paula Mckeehan |
| • Amazon Smile | • Derrick Nelson | • Karrie Duke | • ProPrint Digital |
| • Anderson & Associates/
Richard Jarman | • Eitas | • Kathy and Gary Bussing | • QuikTrip |
| • Angela Fisher | • Emily and John Bailey | • Kathy Parks | • Shaun Powers |
| • Angie Scoville | • Facebook Fundraiser | • Kim Rupe | • Shaver Family Foundation Fund |
| • Ann Ballew | • Frances Guastello | • Lauren Gepford | • Steven Chisholm |
| • B. Jerome Wheeler | • Gina Powell | • Laurie Phillips | • Terri Johnson |
| • Christian Roesler | • Jeremie and Mandi Ballinger | • Leland and Gayle Beckmon | • Therap Services |
| • Clay County DDRB | • Jim and Karla Johnson | • Lisa Schiefelbine | • Yvonne Goings |
| • Connie Kramer | • Jo Puetz | • Marlene White Kansas | • Zachary Helm |
| • Cynthia Pflumm | • Joy Tipton | • Novice Buffo | |
| • David Sunderland | • Juanita Shirley | • Panhandle Eastern Pipeline
Company LP | |
| | • Justin Antoniotti | | |



CDDKC.ORG



Karrie Duke, Chief Development Officer • Shaun Powers, Chief Financial Officer • Sarah Mudd, Chief Executive Officer • Mark Riley, Chief Program Officer • Carmen Jordan, Chief Human Resources Officer